

574



ALIBUS Series IP protocol converter

Installation and Use Manual V1.0

Acrel Electric Co., Ltd.

Declaration

The copyright is the property of Acrel. Any information in any paragraph or section cannot be extracted, copied or otherwise reproduced or propagated. Otherwise offenders shall take all consequences.

All rights are reserved.

Acrel reserves the right to modify the product specifications herein without notification. Please consult the local agent about the latest specifications before placing a purchase order.

Contents

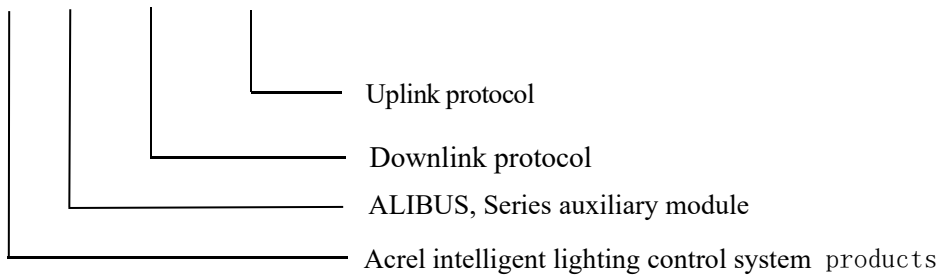
1. Overview	1
2. Product model number	1
3. Functional description	1
4. Technical parameters	1
5. Installation and wiring	2
5.1. Appearance and installation dimensions (in mm)	2
5.2., Installation method	2
5.3. Description of the wiring terminal	2
5.4. System network diagram	3
6. Use the operation guide	3
6.1., Net port description	3
6.2. Description of the indicator light	4
6.3. Local IP address port configuration information	4
7. Troubleshooting	5
8. Precautions	5

1. summary

ALIBUS Series IP protocol converter ASL200-485-IP (hereinafter referred to as converter), as part of ALIBUS intelligent lighting control system, and drive, intelligent panel, sensors and other modules form a complete set of the control system, in large public buildings, building lighting intelligent control, protocol conversion, filtering the message, reduce the bus load, expand the system capacity, to ensure the stability and efficiency of the system control. The module adopts advanced CM technology with high stability and high reliability.

2. product model

ASL 200 - 485 - IP



3. functional description

ASL200-485-IP, as the converter of the standard ALIBUS bus and TCP / IP protocol, can provide configuration, management, download and other functions for other devices on the bus through the intelligent lighting system software. The main functions of the converter include the following points:

- The IP address is setting up the connection
- ALIBUS, system network expansion
- ALIBUS, Communication software connection
- Configuration management of the bus devices to download

4. technical parameter

Table 1: Technical parameters table

working power supply	AC220V±10%, 50Hz
Power supply output	DC24V, 830mA
Power consumption itself	≤2W
External connection	Super six types with shielding parallel network cable
temperature range	Operating temperature: -5°C ~ + 45°C
	Storage temperature: -25°C ~ + 55°C
	Transportation temperature: -30°C ~ + 70°C
Environmenta l requirements	Maximum air humidity: 95%
Case protection grade	IP20
install	Guide rail installation

5. Installation and wiring

5.1. Appearance and installation dimensions (in mm)

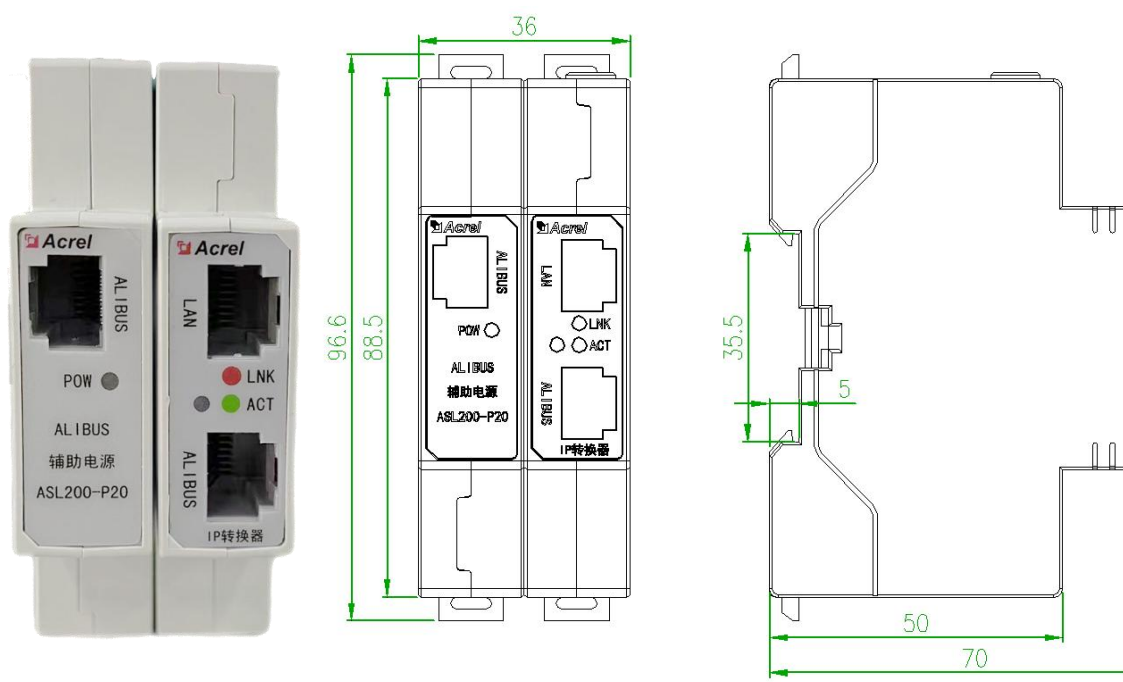


Figure 1. Appearance and external dimensions

5.2., Installation method

The converter is suitable for guide rail installation, by holding the converter into the track and the buckle.

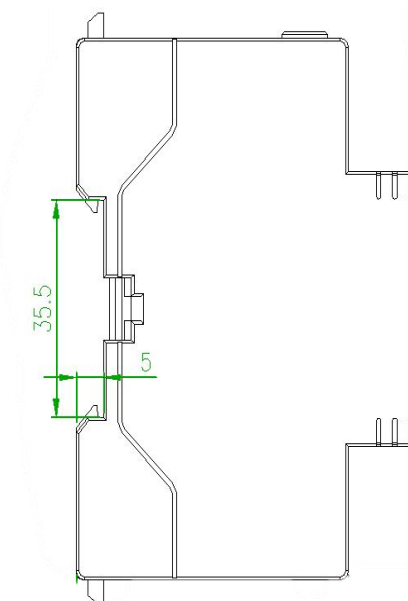
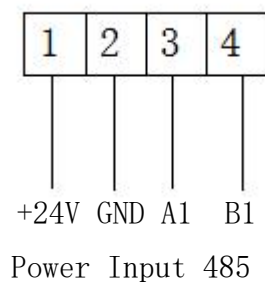


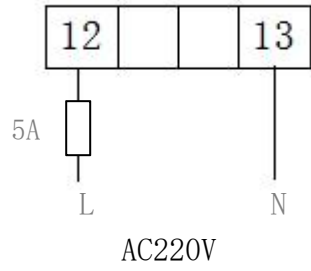
Figure 2. Installation mode diagram

5.3. Description of the wiring terminal

- IP changer



- ALIBUS Auxiliary power supply



5.4. System network diagram

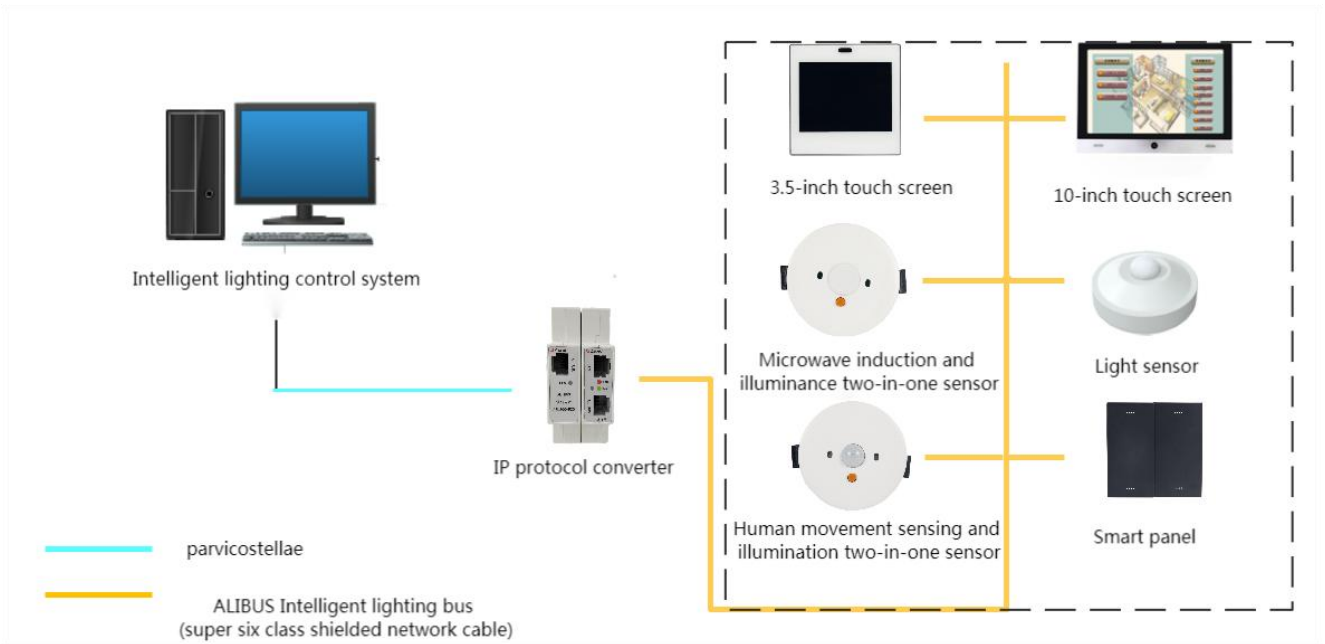


Figure 2. System networking diagram

6. Use the operational guidelines

6.1., Net port description

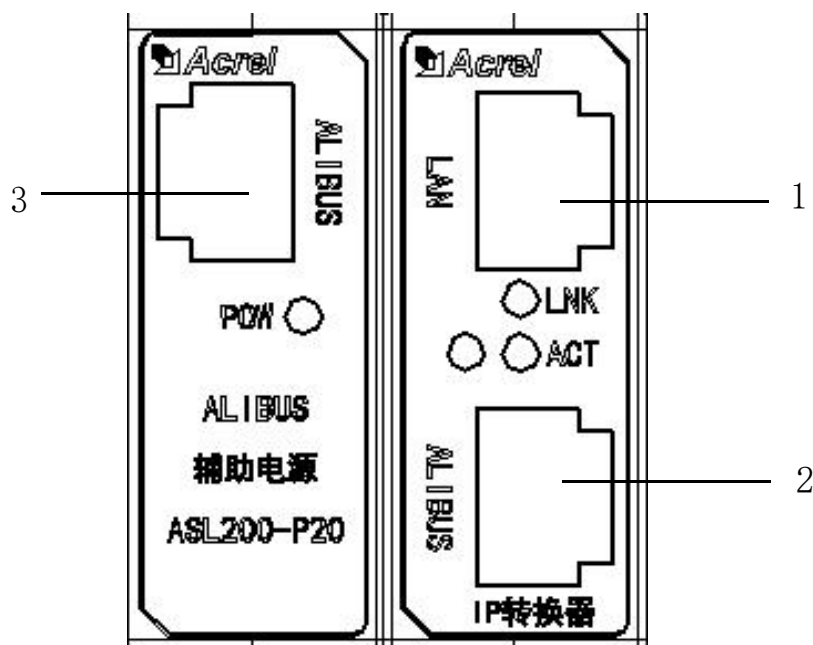


Table 2 Network port description table

appearance	order number	name	act on	remarks
changer	1	LAN joggle	Upload to the intelligent lighting upper computer monitoring software	Standard RJ 45 interface, with support for TCP / IP protocol
	2	ALIBUS joggle	communication	Using the standard RJ 45 interface, Super six types of shielding network cable, support ALIBUS protocol
accessory power supply	3	ALIBUS joggle	Power supply + communication	Using the standard RJ 45 interface, Super six types of shielding network cable, support ALIBUS protocol

6.2. Description of the indicator light

- LNK indicator: converter network cable connection is normal, red indicator is on; converter network cable connection is abnormal, red indicator is off.
- ACT indicator: the yellow indicator flashes when the converter has data sent and received; the yellow indicator is off when no data is sent and received.
- POW indicator: 24V power output is normal, the indicator is red; 24V power has no output, the indicator is off.

6.3. Local IP address port configuration information

Connect the A1 and B1 ports of the IP protocol converter through the USB to 485 tool, open the "gateway configuration" interface in the configuration software, click "connect port", and then click "read", will read the local IP, local port, subnet mask, default gateway, and can be configured according to the actual requirements.



7. troubleshooting

- Under the normal circumstances of AC220V power supply, the indicator light is not on, please contact the manufacturer and supplier for replacement or repair.

8. matters need attention

- Before using the product, please check whether the appearance is in good condition. If there is damage, find the seller for replace in time.
- Wire correctly according to the instruction manual and check carefully after the wiring to ensure the wiring is correct.
- When wiring, please select the ALIBUS interface (network port) and bus cable (super six with shielded network cable).
- In the process of product use, pay attention to moisture-proof, shock-proof and dustproof.
- Products are strictly prohibited to rain or contact with other liquids and corrosive gases, such as damp or liquid invasion, please dry treatment in time. For product installation, repair and replacement, please contact the professional maintenance personnel or our company.

Change the record

Revised edition	Revision time	Revised terms

Headquarters: Acrel Co., LTD.

Address: No.253 Yulv Road Jiading District, Shanghai, China

TEL.: 0086-21-69158338 0086-21-69156052 0086-21-59156392 0086-21-69156971

Fax: 0086-21-69158303

Web-site: www.acrel-electric.com

E-mail: ACREL008@vip.163.com

Postcode: 201801

Manufacturer: Jiangsu Acrel Electrical Manufacturing Co., LTD.

Address: No.5 Dongmeng Road,Dongmeng industrial Park, Nanzha Street,Jiangyin

City,Jiangsu Province,China

TEL: 0086-510-86179966

Fax: 0086-510-86179975

Web-site: www.jsacrel.com

Postcode: 214405

E-mail: sales@email.acrel.cn